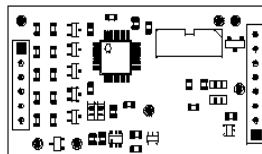




Four Lead ECG OEM board

EG04000

Technical Manual



Copyright © Medlab 2014 - 2019

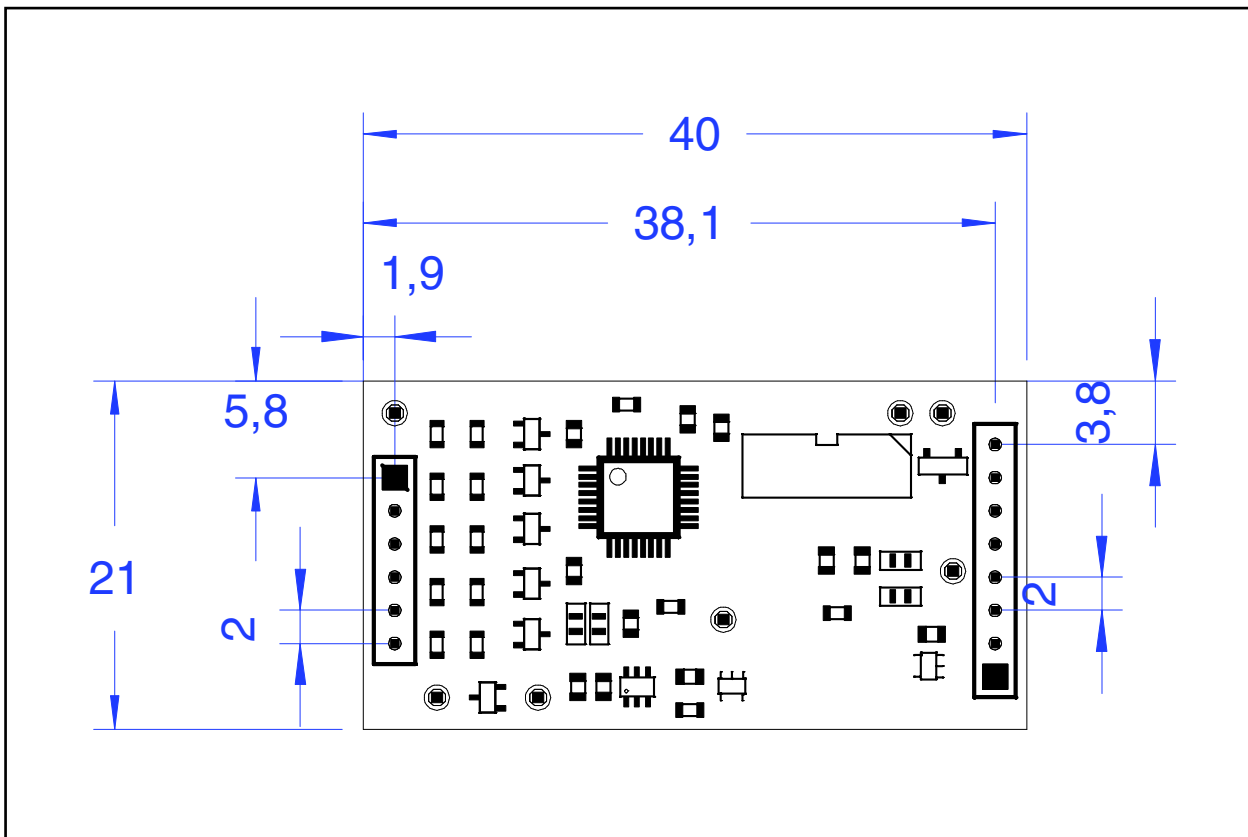
Version 1.01

Medlab medizinische Diagnosegeräte GmbH
Helmholtzstrasse 1a
76297 Stutensee
Germany
Tel. +49(0)7244 741100
oemsales@medlab.eu
www.medlab.eu

Table of Content

Mechanical Dimensions	4
Overview	4
Module Connectors	5
Physical Units of Data	5
Technical Data (Specifications)	6
Connector Assignment	7
Technical Description for TR EN60601-2-27	8
Serial Transmission	10
Software Protocol Description	
Serial Transmission Protocol	11
Packet Description	13
Commands from Host to Module	16
Test Program	18
Regulatory Considerations	18
History	19

Mechanical Dimensions



Mechanical drawing, top view of the module (2:1, all measures in mm)

Overview

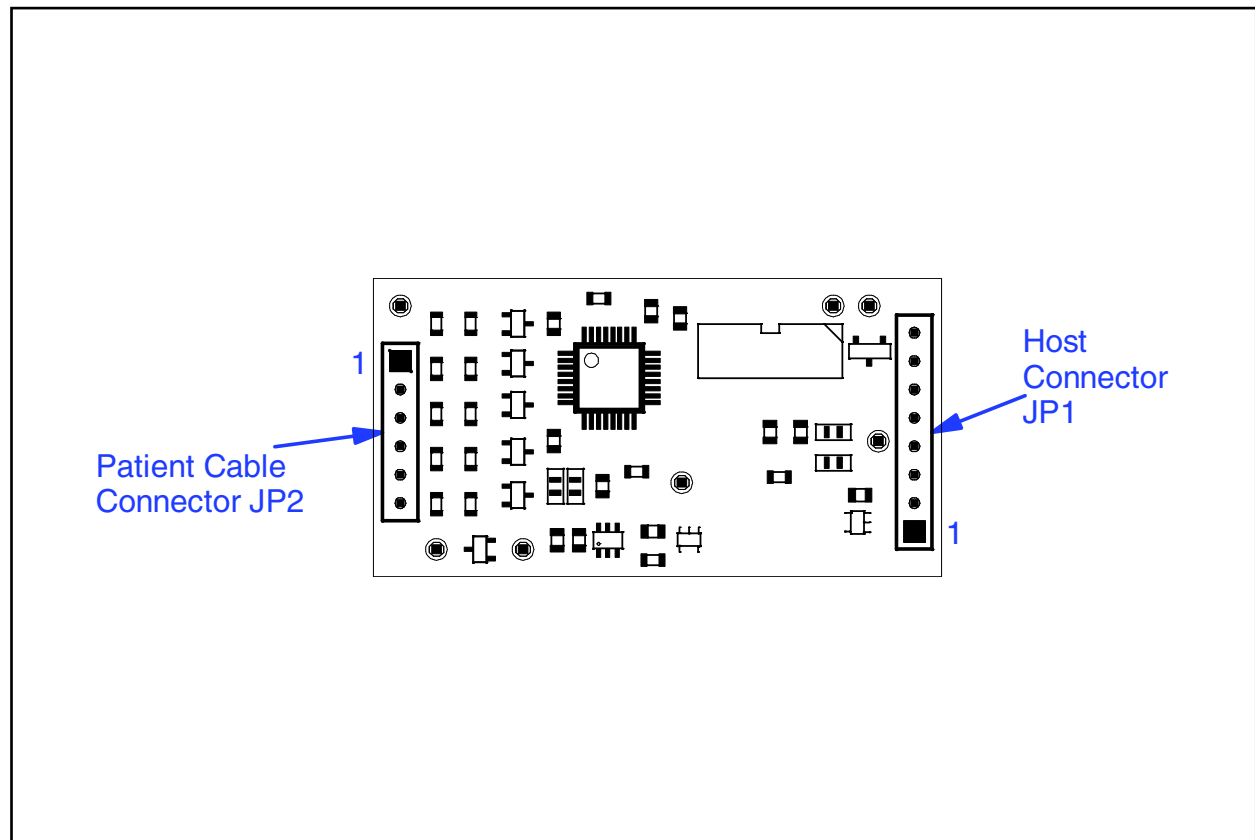
The EG04000 is a four lead six channel ECG module. The module can work with a four lead cable to show 6 channels and with a three lead cable to show one channel of ECG. An advanced pulse detection algorithm is integrated.

The board does **not** include a patient isolation and is powered by a single 3.3 VDC supply, consuming less than 75 mW. The input leads are **not** defibrillation protected. Therefore, and because of its small size and low power consumption, the module is primarily intended to be used in battery powered applications and for long term recording / data logging.

When using a four lead cable, the module can output the following channels synchronously: I, II, III, aVR, aVL, aVF.

When using a three lead cable, the module can output the following channels: I or II or III, depending on positioning of the electrodes.

Module Connectors



Description of connectors and areas of the module (2:1)

Physical Units of Data

Scaling of ECGs is done in the units "cm/mV" for the Y-axis and in "mm/sec" for the X-axis.

Pulse rate is transmitted in „bpm“ (beats per minute).

Transmission speed for the wave is indicated in Hz (sec^{-1}).

ECG amplitudes are typically indicated in „cm/mV“. Since this is directly depending on the resolution of the screen the user is working on, the transmitted samples are not scaled, but fall into the range of 0-0xF7 (8 Bit samples, 0xF8 to 0xFF reserved for commands). It is within the responsibility of the user to scale the transmitted samples in a way that the waves displayed on his screen fit to the usual scales used in medicine, 0.5, 1, 2, and 4 cm/mV. The amplification of the module in the different amplification stages is:

Stage 1	Stage 2	Stage 3	Stage 4
1mV = 32	1mV = 64	1mV = 128	1mV = 256

Standard values for the trace speed are 12.5 mm/sec, 25 mm/sec and 50 mm/sec.

Technical Data (Specifications)

Mechanical size:	40 mm x 21 mm see page 4 for board drawing 4 layer PCB, thickness 1 mm
Maximum height:	5 mm
Attachment:	two connectors with 2mm spacing
Weight:	6 g
Operating voltage:	3.3 Volts DC, $\pm 5\%$, 22 mA
Operating temperature:	-20°C ... 45°C
Storage temperature:	-30°C ... 65°C
Operating humidity:	5%-95%, non-condensing
Power consumption:	< 75 mW while measuring
Input:	Not defibrillation protected
Isolation:	No patient isolation
Amplification:	Four stages, user selectable
Data transmission:	Four data output rates, user selectable
Filtering:	50 Hz, 60 Hz or no notch filter
Amplifier frequency range:	0.05 to 70 Hz
Operating modes:	Monitoring - and diagnostic mode, selectable by command
Lower edge frequency:	0.67 Hz (monitoring) or 0.05 Hz (diagnostic)
Upper edge frequency:	40 Hz (monitoring) or 70 Hz (diagnostic)
QRS detection:	30 .. 247 bpm $\pm 1\%$, ± 1 Digit, 12 beat average
Pacemaker:	Pacemaker detector $\pm 2\text{mV}$ to $\pm 700\text{mV}$, 0.5-2ms pulse width, (can also be turned off)
Output:	Asynchronous serial output with CMOS levels (0...3.3 V) Separate pulse trigger output, CMOS levels (0...3.3 V) Outputs not isolated from patient
Protocol:	Bidirectional, packet oriented, serial protocol
Connector:	2 mm spacing for ECG - and host connector

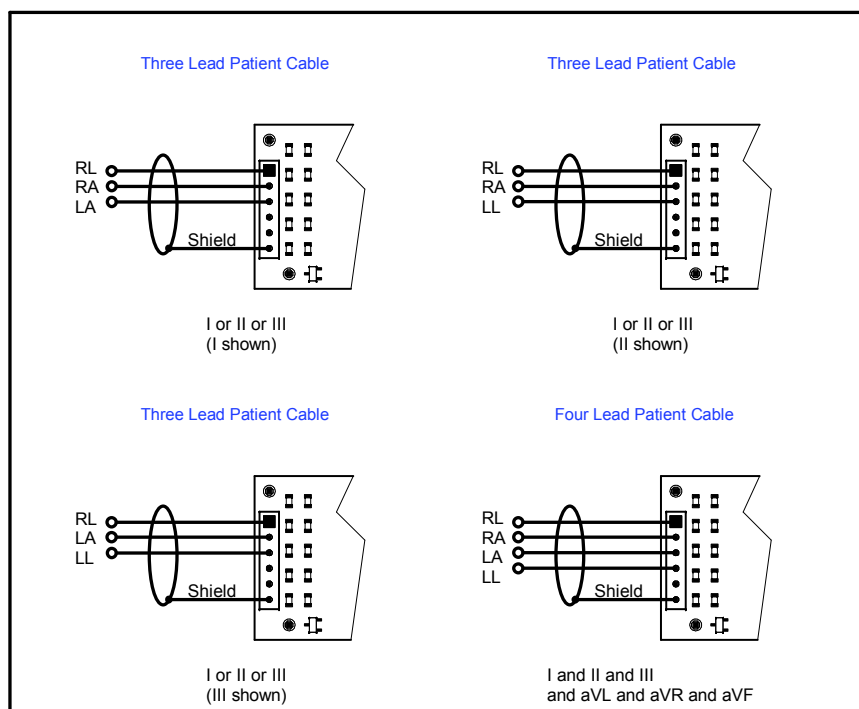
Connectors

Header for host connection:

JP1:	1	VCC (3.3 VDC)
	2	Power down
	3	N.C. (Not connected)
	4	Pulse trigger output
	5	N.C.
	6	RxD (Data input)
	7	TxD (Data output)
	8	GND

Header for patient cable connection:

JP2:	1	RL	Right leg
	2	RA	Right arm
	3	LA	Left arm
	4	LL	Left leg
	5	N.C.	Not conneted
	6	Shield	Patient GND (connected to input GND)



ECG cable connection

Technical Description for TRF EN 60601-2-27

When preparing a test report form (TRF) for proof of compliance of the users medical product to EN 60601-2-27:2014, the following remarks / technical data will be helpful or needed:

Input Impedance:	> 10 MOhm
Common mode rejection ratio:	> 90 dB at 50 Hz or 60 Hz
Input Dynamic Range:	± 5 mV AC, ± 300 mV DC
Leads-off sensing current:	Applied currents less than 150 nA

The following information references particular sections of EN 60601-2-27:

Tall T-wave rejection, section 201.7.9.2.9.101 b) 2)

T-wave of 1.1 mV amplitude will not affect heart rate determination.

Heart rate averaging, section 201.7.9.2.9.101 b) 3)

The pulse rate is averaged over the last 12 detected pulses.

QRS Detection, section 201.12.1.101.15 (various sections)

If the EG04000 is set to adult mode, the heart rate meter will not respond to ECG signals having a QRS amplitude of 0,15mV or less, or R-waves of a duration of 10 ms or less, with an amplitude of 1 mV.

The detection range of QRS amplitudes is 0,5 mV to 5 mV, for durations of the QRS complex ranging from 70 ms to 120 ms, up to a signal rate of 300 BPM.

If the EG04000 is set to neonate mode, the detection range of QRS amplitudes is 0,5 mV to 5 mV, for durations of the QRS wave ranging from 40 ms to 120 ms, up to a signal rate of 350 BPM.

Response to irregular rhythm, section 201.7.9.2.9.101 b) 4)

A1) Ventricular bigeminy: the EG04000 counts both large and small QRS complexes to display a rate of 80 bpm.

A2) Slow alternating ventricular bigeminy: the EG04000 counts both large and small QRS complexes to display a rate of 60 bpm.

A3) Rapid alternating ventricular bigeminy: the EG04000 counts all QRS complexes to display a rate of 120 bpm.

A4) Bi-directional systoles: the EG04000 counts all QRS complexes to display a rate of 90 bpm.

Heart rate meter response time, section 201.7.9.2.9.101 b) 5)

a) Change from 80 to 120 BPM: 5 sec

b) Change from 80 to 40 BPM: 7 sec

Time to alarm for tachycardia, section 201.7.9.2.9.101 b) 6)

Waveform B1:	Amplitude	Time to alarm
	0,5 mV	1 sec
	1 mV	1 sec
	2 mV	1 sec
Waveform B2	Amplitude	Time to alarm
	1 mV	1 sec
	2 mV	1 sec
	4 mV	1 sec

Pacemaker pulse display capability, section 201.12.1.101.12

The EG04000 is capable of displaying the ECG signal in the presence of pacemaker pulses with amplitudes of ± 2 mV to ± 700 mV and durations of 0.5 ms to 2.0 ms. An indication for the pacemaker pulse is provided.

Pacemaker pulse rejection, section 201.12.1.101.13**Without over and undershoot (rectangular pulse):**

- a) For single (ventricular-only) pacemaker pulses alone, with 0.1 and 2.0 ms pulse-widths and ± 2 mV and ± 700 mV pulse-amplitudes, the EG04000 correctly displays heart rate as zero bpm (Asystole).
- b) For single (ventricular-only) pacemaker pulses with normally paced QRS-T, with 0.1 and 2.0 ms pulse-widths and ± 2 mV and ± 700 mV pulse-amplitudes, the EG04000 correctly displays heart rate of the QRS-T rhythm (60 bpm for the specified test waveform).
- c) For single (ventricular-only) pacemaker pulses with ineffectively paced QRS pattern, with 0.1 and 2.0 ms pulse-widths and ± 2 mV and ± 700 mV pulse-amplitudes, the EG04000 correctly displays heart rate of the underlying QRS-T rhythm (30 bpm for the specified waveform).
- d) For atrial/ventricular pacemaker pulses alone, with 0.1 and 2.0 ms pulse-widths and ± 2 mV and ± 700 mV pulse-amplitudes, the EG04000 correctly displays heart rate of zero bpm (Asystole).
- e) For atrial/ventricular pacemaker pulses with normally paced QRS-T, with 0.1 and 2.0 ms pulse-widths and ± 2 mV and ± 700 mV pulse-amplitudes, the EG04000 correctly displays heart rate of the QRS-T rhythm (60 bpm for the specified test waveform).
- f) For atrial/ventricular pacemaker pulses with ineffectively paced QRS pattern, with 0.1 and 2.0 ms pulse-widths and ± 2 mV and ± 700 mV pulse-amplitudes, the EG04000 correctly displays heart rate of the underlying QRS-T rhythm (30 bpm for the specified test waveform).

With over and undershoot:

- a) For single (ventricular-only) pacemaker pulses alone, with 0.1 and 2.0 ms pulse-widths and ± 2 mV and ± 700 mV pulse-amplitudes, the EG04000 correctly displays heart rate of zero bpm (Asystole).
- b) For single (ventricular-only) pacemaker pulses with normally paced QRS-T, with 0.1 and 2.0 ms pulse-widths and ± 2 mV and ± 700 mV pulse-amplitudes, the EG04000 correctly displays heart rate of the QRS-T rhythm (60 bpm for the specified waveform).
- c) For single (ventricular-only) pacemaker pulses with ineffectively paced QRS pattern, with 0.1 and 2.0 ms pulse-widths and ± 2 mV and ± 700 mV pulse-amplitudes, the EG04000 correctly displays heart rate of the underlying QRS-T rhythm (30 bpm for the specified waveform).
- d) For atrial/ventricular pacemaker pulses alone, with 0.1 and 2.0 ms pulse-widths and ± 2 mV and ± 700 mV pulse-amplitudes, the EG04000 correctly displays heart rate of zero bpm (Asystole).
- e) For atrial/ventricular pacemaker pulses with normally paced QRS-T, with 0.1 and 2.0 ms pulse-widths and ± 2 mV and ± 700 mV pulse-amplitudes, the EG04000 correctly displays heart rate of the QRS-T rhythm (60 bpm for the specified test waveform).
- f) For atrial/ventricular pacemaker pulses with ineffectively paced QRS pattern, with 0.1 and 2.0 ms pulse-widths and ± 2 mV and ± 700 mV pulse-amplitudes, the EG04000 correctly displays heart rate of the underlying QRS-T rhythm (30 bpm for the specified test waveform).

Serial Transmission

The host connection to the board is a serial, asynchronous communication interface operating at 115200 baud, 8 data bits, an even parity bit and one stop bit. CMOS voltage levels are available (0 ... 3.3V).

The protocol is block oriented. Each block also includes a checksum in the transmitted data.

The EG04000 sends data and receives commands. Commands are one byte characters, some of them have an additional parameter, others just toggle an internal switch in the EG04000 module.

The neutral line of the ECG is located at 128 (0x80), since the module transmits unsigned data.

For details, please see the protocol description on the following pages.

Serial Transmission Protocol

The board transmits up to 6 graphical waveforms synchronously, a pulse value and several status bytes. Transmission is done in blocks. The integrity of the blocks is secured by:

- 1) an even parity bit in each transmitted byte.
- 2) a checksum for each block

Even parity in this case means that the sum of all bits in one byte, including the parity bit, is „0“.

The module can receive commands over its serial interface. For example, the user can select transmission speed of the wave block, set the amplification of the ECG amplifiers and select which channels should be transmitted by the board. The transmitted channels that are available with a four lead cable are:

- 1) I, Einthoven Lead
- 2) II, Einthoven Lead
- 3) III, Einthoven Lead
- 4) aVR, Goldberger Lead
- 5) aVL, Goldberger Lead
- 6) aVF, Goldberger Lead

To reduce overhead for the waveform transmission, the wave block uses another checksum algorithm as the status and value blocks do.

The EG04000 works with a three lead- or a four lead cable. Only parts of the maximum number of channels can be measured if not all four electrodes are connected (see page 7).

The board contains a lead-off detection that gives information about each single non-connected electrode.

It is not possible for the module to automatically detect which cable is connected, since the situation is the same whether, for example, a three lead cable or a four lead cable with one non-attached lead is used.

It is recommended for the user to use a connection system with coded cables (shorted, unused pins in the connector for example), to make the host system aware of which cable style currently is connected to the EG04000 and to ignore lead-off messages that do not exist for the respective cabling system. The simplest solution is to have the end-user select which cable is connected in a menu entry in the host's user interface.

Channels that are requested by the host but cannot be measured, because of no electrode contact or the respective lead missing in the cable, are transmitted as "0x80", neutral line.

Transmission is done in blocks. The basic interface parameters are:

115200 baud, 1 start bit, 8 data bits, an even parity bit and one stop bit.

The first block transmitted will be a status block.

The default settings after power up are:

100 wave blocks per second, I,II,III activated, 1cm/mV amplification, monitoring bandwidth, 50 Hz filter active. The host can adjust this to his needs by sending commands to the module.

To keep the traffic on the serial line as low as possible, the following protocol has been implemented. The reasons for choosing this protocol where as following:

The wave blocks are to be transmitted quite often (up to 300 times per second) and sometimes they contain only one channel of information. For this single channel, one needs at least: a block header, a counter, a checksum and the wave sample value itself. To reduce overhead, the number of wave samples in package have been packed into one byte, together with the checksum. The checksum for the wave packet is therefore only 4 bits long, because the remaining four bits are needed for the wave counter. The status and the value blocks use 7 bit checksums. There is still enough security, because each byte has its own parity bit.

Transmitted blocks:

1. There are three types of regular data packets, **waveform blocks**, **value blocks** and **status blocks**. Beginning of a packet is indicated by the marker 0xF8 (wave), 0xF9 and 0xFA (values) and 0xFC (status). Every other transmitted byte has a value of less than 0xF8. This allows for easy synchronisation.
2. Waveform blocks are transmitted 50, 100, 150 or 300 times per second, as defined by the last „Speed“ command. Initial value is 100 / sec.
3. Status blocks are transmitted once per second.
4. Value blocks are transmitted at each detected pulse (0xFA marker, can be used for a pulse „beep“) and at each detected respiration (0xF9 marker).
5. The data protocol is self synchronizing, e.g. one cannot loose synchronisation when some bytes are lost during transmission. Only one package is lost in that case.
6. There is one special package: after receiving the command „I“ („identify“), the board sends a string that contains the board's name, hardware version info („H0“), and software version info („S01“). This string is in ASCII format, and is zero terminated. The identification block starts with marker 0xFD, to ease decoding.

Example for answer to identify command:

```
<0xFD>"EG04000H0S01"<0x00>
```

On the next page, the structure of the blocks are described.

A waveform block contains between three and 10 bytes:

	Bit 7	Bit 6	Bit 5	Bit 4	Bit 3	Bit 2	Bit 1	Bit 0
Byte 1 Sync	1	1	1	1	1	0	0	0
Byte 2 Ctr/Chk	Bit 3 Ctr	Bit 2 Ctr	Bit 1 Ctr	Bit 0 Ctr	Bit 3 Chksum	Bit 2 Chksum	Bit 1 Chksum	Bit 0 Chksum
Byte 3 Wave 1	Bit 7 Wave 1	Bit 6 Wave 1	Bit 5 Wave 1	Bit 4 Wave 1	Bit 3 Wave 1	Bit 2 Wave 1	Bit 1 Wave 1	Bit 0 Wave 1
Byte 4 Wave 2	Bit 7 Wave 2	Bit 6 Wave 2	Bit 5 Wave 2	Bit 4 Wave 2	Bit 3 Wave 2	Bit 2 Wave 2	Bit 1 Wave 2	Bit 0 Wave 2
Byte 5 Wave 3	Bit 7 Wave 3	Bit 6 Wave 3	Bit 5 Wave 3	Bit 4 Wave 3	Bit 3 Wave 3	Bit 2 Wave 3	Bit 1 Wave 3	Bit 0 Wave 3
Byte 6 Wave 4	Bit 7 Wave 4	Bit 6 Wave 4	Bit 5 Wave 4	Bit 4 Wave 4	Bit 3 Wave 4	Bit 2 Wave 4	Bit 1 Wave 4	Bit 0 Wave 4
.....								

2+Ctr bytes are transmitted in this block. Ctr is the number of wave samples in the block.

The checksum is the sum of all bytes in the block, except byte 2, the chksum itself, which is ignored for the sum. It includes the sync character (byte 1). Since only 4 bits can be used, the result is "anded" with 0x0F.

The wave samples are limited to a number of 0xF7, so no mix-up with sync bytes can occur.

The channels are not mapped to a byte position in the block, since the user can freely enable/disable the channels independently of each other.

The transmission sequence is always: I, II, III, aVR, aVL, aVF

Example: the host requests "I", "aVF" and "aVL" to be transmitted. Wave 1 will be "I", Wave 2 will be "aVF", and Wave 3 will be "aVL", the block being 5 bytes long.

A value block contains three bytes:

	Bit 7	Bit 6	Bit 5	Bit 4	Bit 3	Bit 2	Bit 1	Bit 0
Byte 1 Sync	1	1	1	1	1	0	Bit 1 Type	Bit 0 Type
Byte 2 Chksum	0	Bit 6 Chksum	Bit 5 Chksum	Bit 4 Chksum	Bit 3 Chksum	Bit 2 Chksum	Bit 1 Chksum	Bit 0 Chksum

3 bytes are transmitted in this block.

Type == 00 → not used

Type == 10 → not used, but reserved for respiration value in other ECG modules

Type == 01 → pulse value

Type == 11 → not used, but reserved for future extensions

The checksum is the sum of all bytes in the block, with byte 2, the chksum itself, ignored for the sum. It includes the sync character (byte 1). Since only 7 bits are used, the result is "anded" with 0x7F.

The values are limited to a number of 0xF7, so no mix-up with sync bytes can occur.

A Status block contains six bytes:

	Bit 7	Bit 6	Bit 5	Bit 4	Bit 3	Bit 2	Bit 1	Bit 0
Byte 1 Sync	1	1	1	1	1	1	0	0
Byte 2 Chksum	0	Bit 6 Chksum	Bit 5 Chksum	Bit 4 Chksum	Bit 3 Chksum	Bit 2 Chksum	Bit 1 Chksum	Bit 0 Chksum
Byte 3 Electrode	0	0	X	X	RA	LA	RL	LL
Byte 4 Channels	0	0	aVF	aVL	aVR	III	II	I
Byte 5 EKGStat	X	Bit 1 Filter 2	Bit 0 Filter 2	EMG Filter1	Bit 1 Amp	Bit 0 Amp	Bit 1 Speed	Bit 0 Speed
Byte 6 Status	0	N	X	X	Bit 3 S3	Bit 2 S2	Bit 1 S1	Bit 0 S0

5 bytes are transmitted in this block. „X“ means the bit is unused and undefined.

The checksum is the sum of all bytes in the block, with byte 2, the chksum itself, ignored for the sum. It includes the sync character (byte 1). Since only 7 bits are used, the result is "anded" with 0x7F.

Electrodes, Byte 3: a „1“ in the respective bit position 0 .. 3 means this electrode is connected

Channels, Byte 4: a „1“ in the respective bit position 0 .. 6 means this wave is transmitted

EKG Status, Byte 5:	Speed:	„00“	50 wave blocks per second
		„01“	100 wave blocks per second
		„10“	150 wave blocks per second
		„11“	300 wave blocks per second
	Amp:	„00“	Amplification stage 1 (lowest)
		„01“	Amplification stage 2
		„10“	Amplification stage 3
		„11“	Amplification stage 4 (highest)
	Filter1:	„0“	EMG filter off
		„1“	EMG filter on

	Filter2:	„00“	50/60 Hz filter off
		„01“	50 Hz filter on
		„10“	60 Hz filter on
Status, Byte 6:	N	0	Adult mode
		1	Neonatal mode
	S0..3	0000	Normal operation
	S0..3	0001	Normal operation, pacemaker detected
	S0..3	0100	Initializing
	S0..3	0101	Searching for electrodes
	S0..3	1000	Simulated output
	S0..3	1010	Selftest error
	Rest:		Not used, but reserved

„Selftest error“ (10) errors are fatal. The module will never go into measuring state.

Status message 8 will be transmitted as long as simulated data is transmitted.

Commands from Host to Module

All commands have a one or two byte structure. They are also sent to the module with 115200 baud. The commands are sent in ASCII format.

Basic Bandwidth of ECG amplifier (Diagnostic or Monitoring mode):

„F“	Parameter: "0" or "1"		
„0“	bandwidth of the amplifier	DC-80 Hz	Diagnostic mode (bear in mind mains filter setting)
„1“	bandwidth of the amplifier	0.67-40 Hz	Monitoring mode (reset value)

Transmission frequency of the waveform packet:

„S“	Parameter: "0", "1", "2" or "7" (0x53 0x31 for example for „S1“)
„0“	send waveform packets 50 times per second
„1“	send waveform packets 100 times per second (reset value)
„2“	send waveform packets 150 times per second
„7“	send waveform packets 300 times per second

Amplification of the waveforms

„A“	Parameter: "0", "1", "2" or "3" (0x41 0x31 for example for „A1“)
„0“	Amplification stage 1 (lowest amplification, should be scaled to 0.5 cm/mV)
„1“	Amplification stage 2
„2“	Amplification stage 3
„3“	Amplification stage 4 (highest amplification, should be scaled to 4 cm/mV)

Each amplification stage has **double the sensitivity** of the previous stage

Channel selection (1-8 wave channels can be selected)

„C“ Parameter: 1 byte. Each bit in the parameter byte set to „1“ stands for a transmitted wave, a „0“ means that wave is not transmitted.

00100000	aVF
00010000	aVL
00001000	aVR
00000100	III
00000010	II
00000001	I

Example: to receive I, aVR and aVL, send: 0x43 (character ‚C‘), 0x19

Filtering of the waveforms for 50 and 60 Hz line frequency:

„5“	Parameter: "0", "1" or "2" (0x35 0x30 for example for „50“)
„0“	50Hz and 60Hz Filter off
„1“	50Hz Filter on
„2“	60 Hz Filter on

Filtering of the waveforms for EMG interference (~15-30Hz):

„E“ Parameter: „0“ or „1“ (0x45 0x30 for example for „E0“)
 „0“ EMG Filter off (reset value)
 „1“ EMG Filter on

Set board to adult mode or neonate/pediatric mode: ¹⁾

„N“ Parameter: „0“ or „1“ (0x4E 0x30 for example for „N0“)
 „0“ board is in adult mode (reset value)
 „1“ board is in pediatric/neonate mode

Calibration mode (1mV rectangle transmitted for 250 samples):

„K“ output 250 samples of 1mV rectangular waves, then go back to normal mode

Simulated data outputs (useful for testing or exhibitions):

„M“ Parameter: „0“, or „1“
 „0“ use real input for data transmission (reset value)
 „1“ use simulated output waves and values

Pacemaker detection on or off:

„P“ Parameter: „0“, or „1“
 „0“ do not detect pacemaker pulses
 „1“ detect pacemaker pulses (reset value)

Set delay of the pulse trigger signal (active high, 33ms duration):

„T“ Parameter: „0“, „1“, „2“, or „9“
 „0“ Delay of the pulse trigger signal 15ms (reset value)
 „1“ Delay of the pulse trigger signal 50ms
 „2“ Delay of the pulse trigger signal 100ms
 „9“ The signal triggers in the middle between R waves

Identification of the module:

„I“ Identify. A zero terminated ASCII string is transmitted showing module information. The identification block start with marker 0xFD.

¹⁾ the new edition of 60601-2-27 requires different detection ranges for adults and neonates. See page 8 "QRS detection", for details. The EG04000 complies with all requirements of the new (and the old) standard. The board powers up in adult mode, the firmware is therefore compatible to the older versions that did not have a neonatal mode.

Test Program

A Microsoft Windows program (Monitor.exe) is available upon request. The program does not need any installation, just copy it to a directory of your choice and run it.

The software allows selection of transmitted channels, sample rate and amplification as well as selecting filters.

It graphically displays the selected channels.

Regulatory Considerations

The device that has been described in this document is not a final medical product. This means that it cannot be used as a standalone unit to use it on patients.

Therefore, the EG04000 has not been - and also cannot be - CE-marked. The customer has to undertake the procedure of CE-marking with the final product that contains the module. However, several products on the market have successfully passed this certification.

The module complies with the following standards, as far as applicable:

EN 60601-1:2006 + Cor.:2010 + A1:2013

IEC 60601-1-2:2014

EN 60601-2-27:2014

ANSI/AAMI EC13:2002

ANSI/AAMI EC57:1998

During testing and certification of a product, also the user manual of the final product needs to be certified. The user manual has to contain certain technical data and warnings to the end users. We can support customers by supplying material for the manual that has been used during the certification process of Medlab's devices.

The EG04000 does not contain a patient isolation and no defibrillation protection. It cannot be used in a mains powered application, without an additional isolation of BF or CF grade. CF is required for patient monitoring applications.

History:

Rev. 1.00:	Initial Revision
Rev. 1.01:	Edited for EN 60601-2-27:2014

Medlab medizinische Diagnosegeräte GmbH
Helmholtzstrasse 1a
76297 Stutensee
Germany
Tel. +49(0)7244 741100
oemsales@medlab.eu
www.medlab.eu